

Manufacturer's Note:

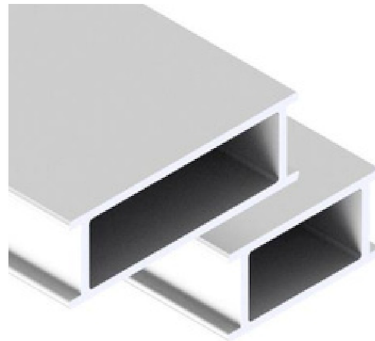
These are most commonly sold in kits. The ARKIT includes 4 (2 Meter) Rails, 4 Joist Connectors, & 40 Top Rail Headpieces. The LPC401-414 pedestals would need to be purchased separately.



Data Sheet

EasyRail Aluminum Joist

To be used w/ LevelPro pedestal w/ Cross Rail Headpiece (LPC401-414)



Function

The EasyRail Aluminum Joist system offers an innovative solution to easily install plank pavers, tiles, or decking. It increases the structural stability of the pedestal system, reduces the amount of pedestals required, and adds more support for the finished material.

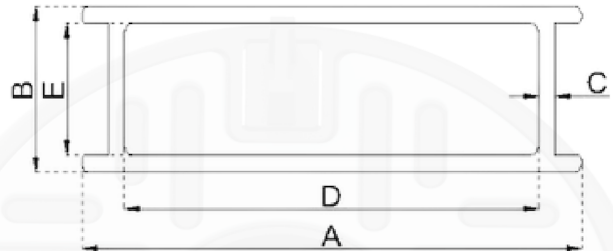
The 'C' channel guides along the edges of the EasyRail joists allow it to be clipped into the Cross Rail Headpiece on the LevelPro (LPC401-414) pedestal ensuring the rail is securely fastened. The 'C' channel also allows the Top Rail head to be fitted onto the EasyRail which can slide up and down the rail depending on the size of the paver/tile being used. In the case where decking is being used, this would simply lie directly on the EasyRail surface and be screwed in using hidden fasteners and Stainless Steel metal screws.

The EasyRail Aluminum joist system is most commonly used for higher pedestal heights to add additional structure stability and support. Cityscape recommends it to be used over 24" of pedestal height. It is also commonly used for plank pavers to reduce the number of pedestals required.

Plastic joist connectors are inserted into each end to join the EasyRail's together.

Capacity

- Tensile Strength (Rm Mpa): Min 190
- Yielding Load (Rp0.2 Mpa): Min 150
- Elongation (A 50% mm): Min 6
- Typical Hardness (HBW): 70
- Recyclable: Yes



DIMENSIONS (INCHES)

Ref.	A	B	C	D	E	F	G	H	I	
1	ARJ40	1.58"	0.79"	0.8"	1.17"	0.63"	-	-	-	-
2	ARJ60	2.36"	0.79"	0.8"	1.96"	0.63"	-	-	-	-

AVAILABLE LENGTHS

- 1 Meter (39.37")
- 2 Meter (78.74")