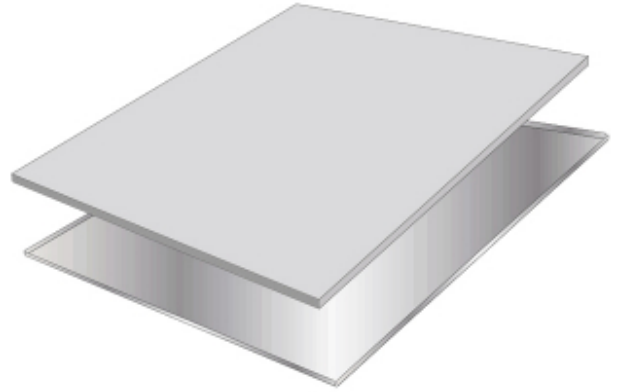


# STEEL TRAY

## PAVER SUPPORT



Steel Tray Paver Support are made of galvanized steel sheets with downturned edges of 3/8" on the four sides, they are double folded to empower the underside of the 3/4" thick pavers and grant them an extra strength.

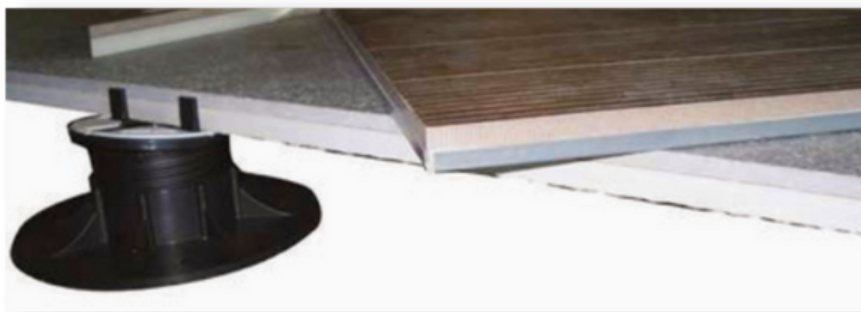
The galvanized metal tray will act as an additional support in the case where a tile is cracked. For proper installation follow the 3 steps below:

1. Ensure both the inside of the tray and bottom side of the tile are clean.
2. Apply an exterior construction adhesive to the tray. 1 bead of glue ever 3" O.C. is recommended.
3. Gently place the tile into the tray and press down firmly.

**SIZE** - 24" (W) x 24" (L)

**WEIGHT** - 4.409 lbs/piece

**MATERIAL** - Galvanized Steel



TIME TO CHANGE